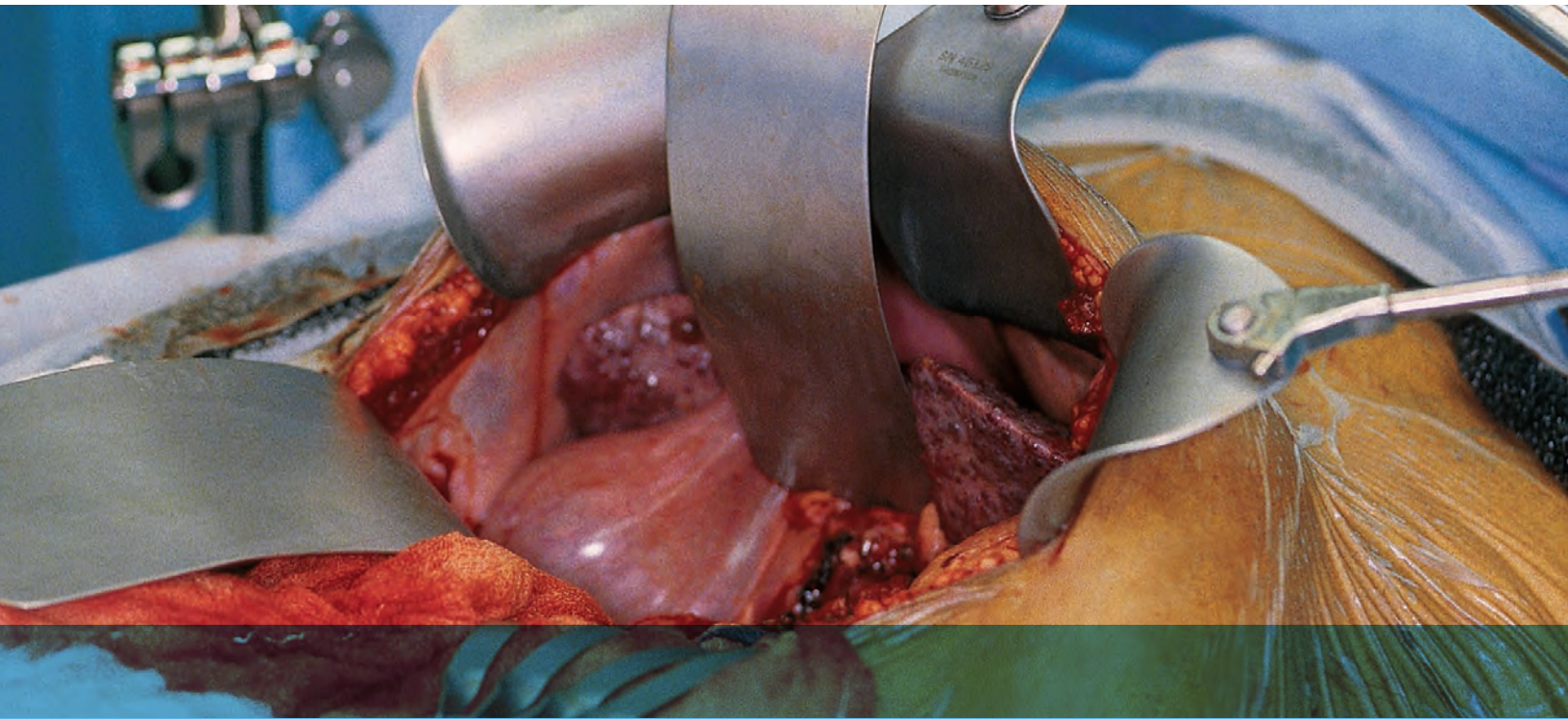


Transplant Selection Guide

Thompson Retractor 



- LIVER TRANSPLANT / RESECTION
- UPPER ABDOMINAL
- PEDIATRIC
- KIDNEY TRANSPLANT
- MINIMAL ACCESS

Uncompromised Exposure.

Innovation In Surgical Retraction

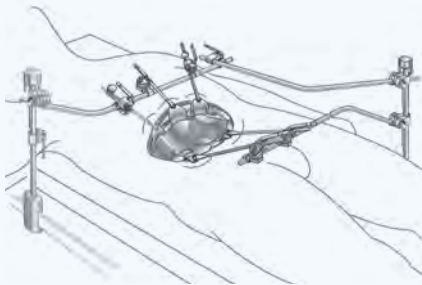
Thompson Surgical Instruments, Inc. is the market leader in surgical retraction and the original manufacturer of the table mounted retractor. In use for over fifty years, the Thompson Retractor is the only mechanical retractor to offer one frame for all exposure needs, multi-planed independent retraction, and unlimited customization.

We understand the value of exposure in successful surgery and are dedicated to providing innovative, high quality retractor systems that deliver safe, versatile, low-profile retraction.

General/Vascular, Transplant, and Oncology surgeons will benefit from the Thompson Retractor's ability to provide Uncompromised Exposure for a variety of procedures ranging from liver to complex abdominal and pelvic cases.

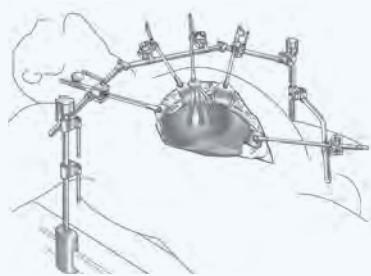
"The Thompson Liver Transplant / Resection System is the best retractor system available." —Michael Angelis MD

LIVER TRANSPLANT / RESECTION



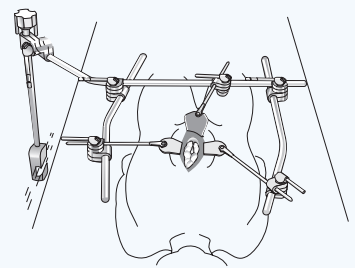
Pages 4-5

BASIC UPPER ABDOMINAL



Page 6

PEDIATRIC



Page 7

Uncompromised Exposure with the Thompson Retractor

Strong and stable, Thompson Retractor Frames offer independently adjustable lateral arms to enable versatile retraction and maintain a low-profile operating field. The system includes patented one-piece retractor handles with S-Lock®, angling and micro-adjustable features. These low-profile handles support all of our blades for exceptional retraction and exposure.

TABLE MOUNTED FRAME

Eliminates shifting and rising blades.



ELITE II RAIL CLAMP

Top control eases attachment to table over sterile drapes. Various shorter and adjustable heights available.



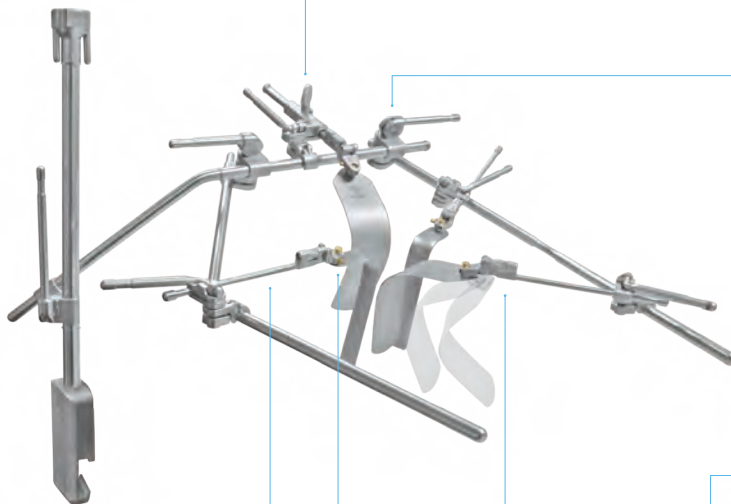
MICRO-ADJUSTABLE TECHNOLOGY

Patented Micro-Adjustable Handles enable increased leverage and precise blade retraction with micro-adjustability.



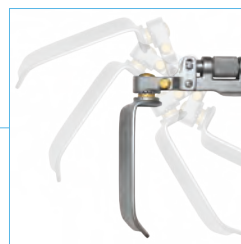
CAM JOINTS

One-piece design offers instant lock-and-release, making set-up, adjustments, and instrument count time quick and easy.



INDEPENDENT FRAME ARMS

Lateral frame arms can be independently adjusted to create a low-profile operating field.

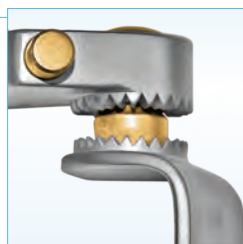


ANGLING TECHNOLOGY

Angling retractor handles provide versatile, low-profile positioning of blades to maintain a low-profile operating field and achieve better exposure.

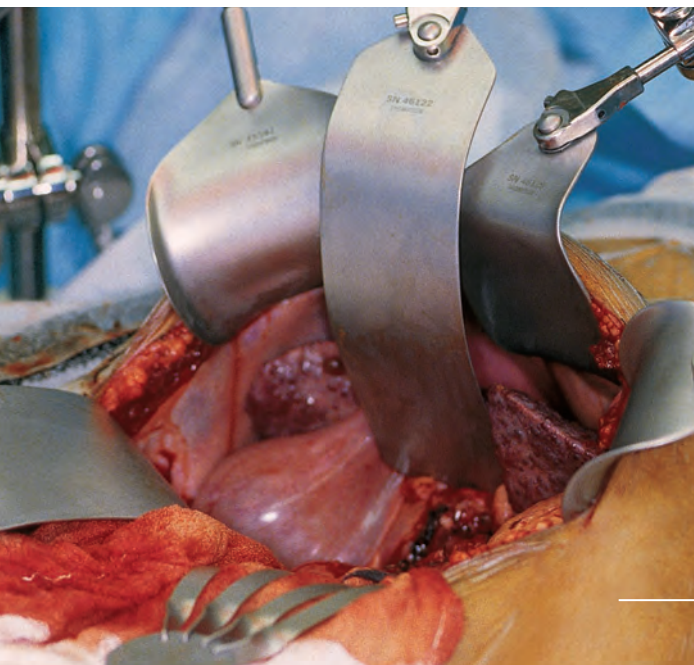
ONE-PIECE CLIP-ON RETRACTOR HANDLES

Retractor handles are available in one-piece, thereby reducing inventory and instrument counts. Patented spring loaded clip-on joints are low-profile, can be clipped anywhere to the frame, quickly secure, and will not fall off. Quick locking handle always points away from the field.



S-LOCK® TECHNOLOGY + QUICK BLADE CHANGE

Patented locking, interchangeable blade feature enables quick blade changes with the push of a button. Added S-Lock technology reduces unwanted blade swivel and enables precise blade placement.



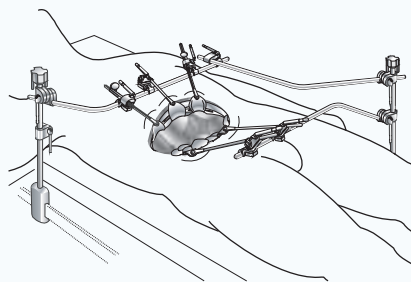
Uncompromised Exposure for Liver Transplant/Resection

Utilizing a bilateral retractor frame set up, the Thompson Retractor provides surgeons with the ability to obtain stable, versatile retraction for liver transplants, liver resections, oncology, and obesity cases. Combined with Thompson Retractor's expansive blade selection designed specifically for each operation, the bilateral set up offers multi-planed retraction and unlimited flexibility for the most complex abdominal and pelvic cases.

The Thompson Retractor provides ideal exposure for liver transplant and liver resection operations. See page 5 for the Liver Transplant/Resection System.

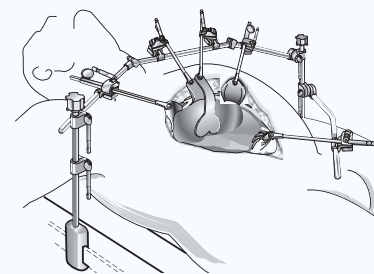
Exclusive Features

Liver Transplant / Resection surgery will benefit from the exclusive features offered by the Thompson Retractor including stable bilateral table mounts, patented hinged crossbars, micro-adjustable handles, and specialty blade styles and sizes.



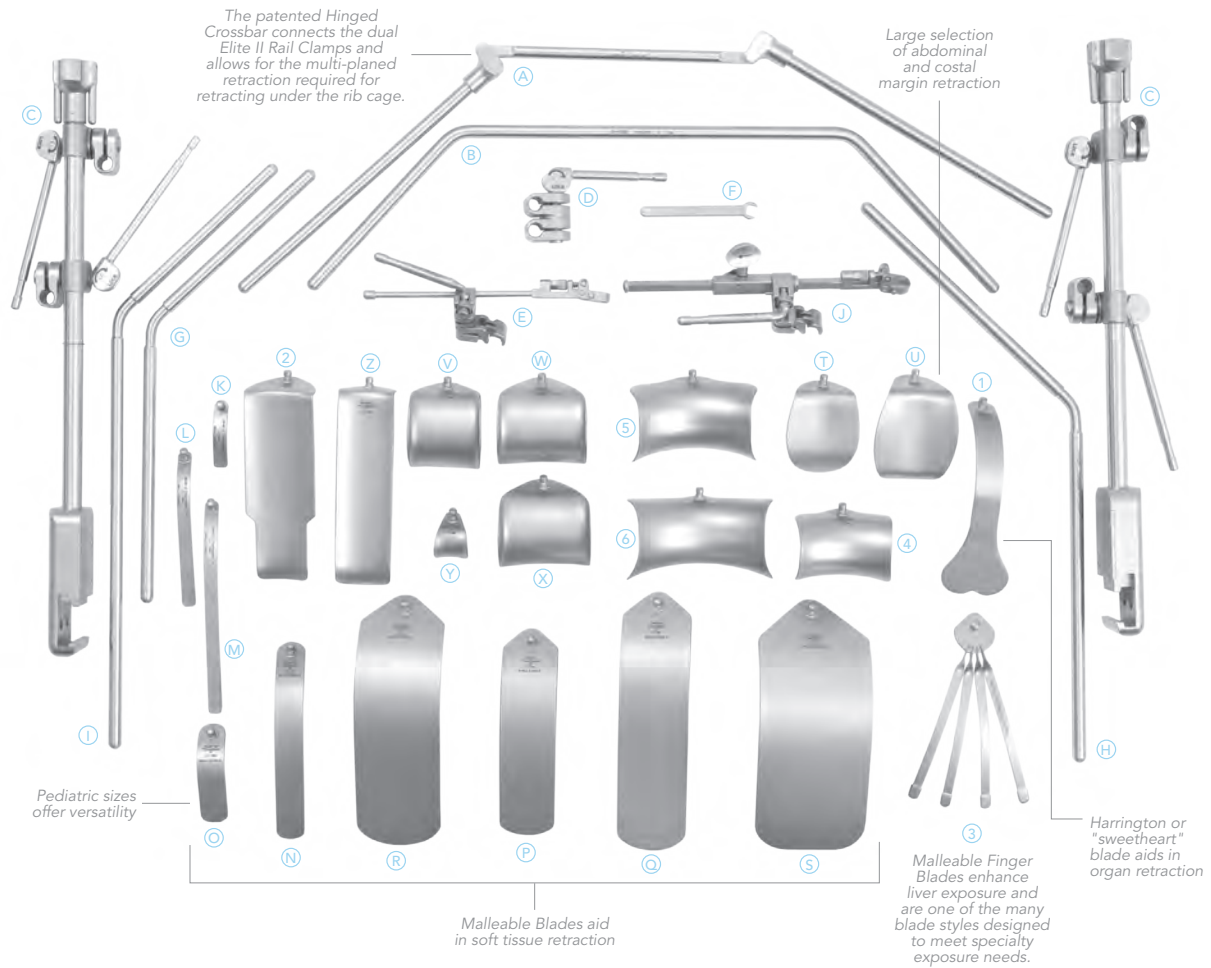
VERSATILE SET UPS

Bilateral retractor frames offer infinite set ups to suit varying exposures and surgeon preferences. Staggering the rail clamps and using angled arms, as shown, is an alternate set up option for abdominal surgery. Bilateral frames may be converted into a unilateral Quick Frame. All frame components are interchangeable.



OBESITY & PEDIATRIC OPTIONS

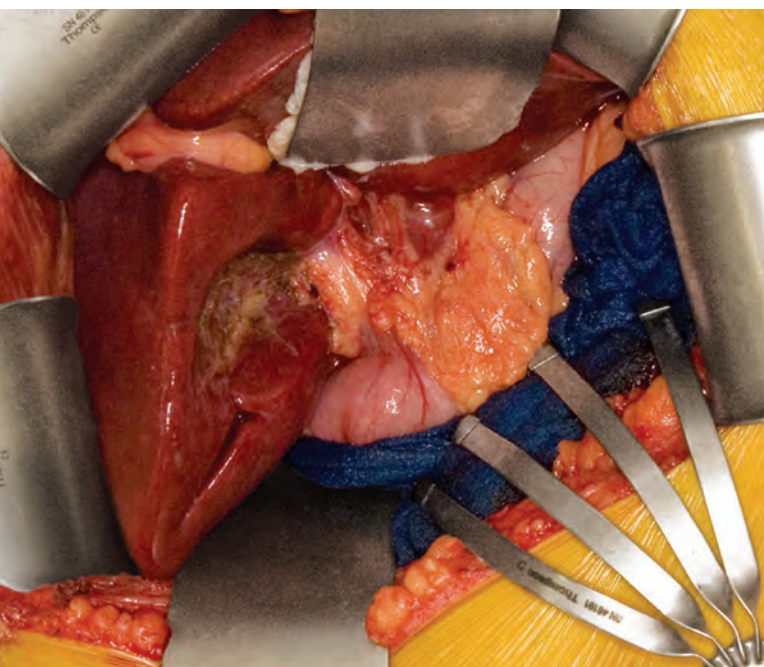
Bariatric and pediatric patients are easily accommodated with a variety of large and small blade sizes found in the liver system. All blade styles are available in custom sizes by request.



LIVER TRANSPLANT / RESECTION SYSTEM

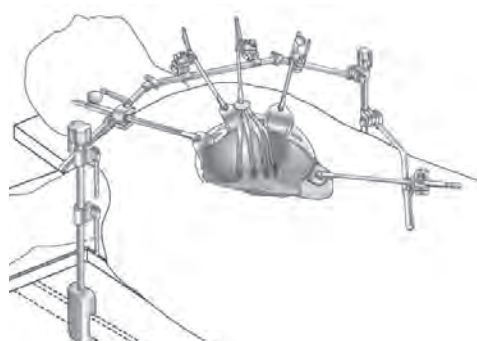
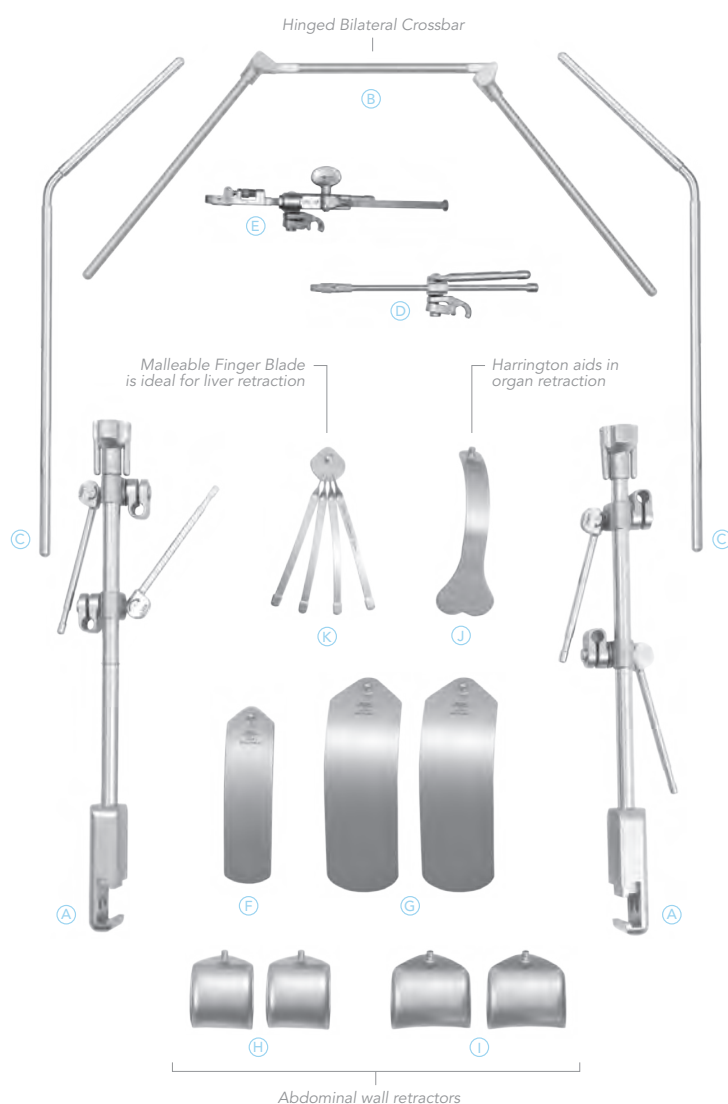
QTY	ITEM DESCRIPTION	S-LOCK PART #	INTERCH. PART #			
	Liver Transplant / Resection System	SL91034A	91034A			
(A) 1	Bilateral Crossbar Hinged (11" x 8 1/2" x 11")	41900H	41900H	(R) 1	Malleable 76mm x 254mm (3" x 10")	SO46124A 46124A
(B) 1	Bilateral Crossbar	41900F	41900F	(S) 1	Malleable 102mm x 254mm (4" x 10")	SO46124B 46124B
(C) 2	Elite II Rail Clamp with 2 Cam Joints 18"	41903AC	41903AC	(T) 1	Kelly 64mm x 76mm (2 1/2" x 3")	SO46129 46129
(D) 2	Cam I Joint Serrated (1/2" x 1/2")	42112C	42112C	(U) 2	Kelly 89mm x 76mm (3 1/2" x 3")	SO46130 46130
(E) 8	Cam II Clip-on with Angling Head	SL42126WA	42126WA	(V) 1	Balfour 70mm x 76mm (2 3/4" x 3") w/o Lips	SO46140C 46140C
(F) 1	Angling Head Wrench	43032	43032	(W) 2	Balfour 83mm x 76mm (3 1/4" x 3")	SO46141 46141
(G) 1	Angled Arm 18" (8" x 10" @ 45°)	44118N	44118N	(X) 2	Balfour 83mm x 76mm (3 1/4" x 3") w/o Lips	SO46141C 46141C
(H) 2	Angled Arm 24"	44124W	44124W	2	Balfour 83mm x 127mm (3 1/4" x 5")	SO46141D 46141D
(I) 1	Angled Arm 24" (8" x 16")	44124N	44124N	(Y) 4	Balfour 30mm x 30mm (1 1/5" x 1 1/5")	SL46142 46142
(J) 2	Micro-Adjustable II Clip-on Angling 10"	SL45006CA	45006CA	(Z) 1	Richardson 57mm x 178mm (2" x 7")	SO46153 46153
(K) 2	Malleable 13mm x 64mm (1/2" x 2 1/2")	SL46115	46115	(1) 1	Harrington 64mm x 152mm (2 1/2" x 6")	SL46160 46160
(L) 2	Malleable 13mm x 152mm (1/2" x 6")	SL46116	46116	(2) 1	St. Mark's 64mm x 178mm (2 1/2" x 7")	SO46188 46188
(M) 2	Malleable 13mm x 203mm (1/2" x 8")	SL46117	46117	(3) 2	Malleable Finger 6"	SL46191 46191
(N) 1	Malleable 25mm x 203mm (1" x 8")	SL46118	46118	(4) 1	Balfour 83mm x 57mm (3 1/4" x 2 1/4")	SO46241A 46241A
(O) 1	Malleable 25mm x 102mm (1" x 4")	SL46118P	46118P	(5) 1	Balfour 102mm x 57mm (4" x 2 1/4")	SO46241B 46241B
(P) 1	Malleable 51mm x 203mm (2" x 8")	SL46122	46122	(6) 1	Balfour 114mm x 57mm (4 1/2" x 2 1/4")	SO46241C 46241C
(Q) 2	Malleable 64mm x 254mm (2 1/2" x 10")	SL46124	46124	2	Instrument Case with Pin Mat (22" x 11" x 3 1/2")	50000G 50000G
				1	Instrument Case (26" x 10" x 5")	50000BL 50000BL

System includes S-Lock Bilateral Frame or Bilateral Frame.
Note: Pediatric Abdominal System is on page 7.



Uncompromised Upper Abdominal Exposure

Achieve excellent upper abdominal exposure for a variety of procedures utilizing the Thompson Retractor. A basic upper abdominal system has been created primarily for larger patients and exposures utilizing the best features and blades from more comprehensive systems. The basic system provides a bilateral table mount for extra stability, a hinged crossbar for multi-planed upper abdominal retraction, and a versatile selection of larger retractor blades.

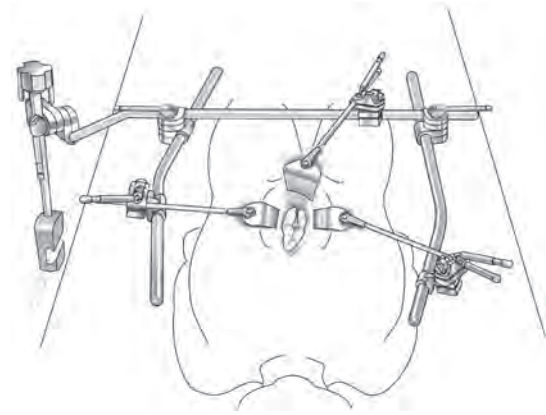
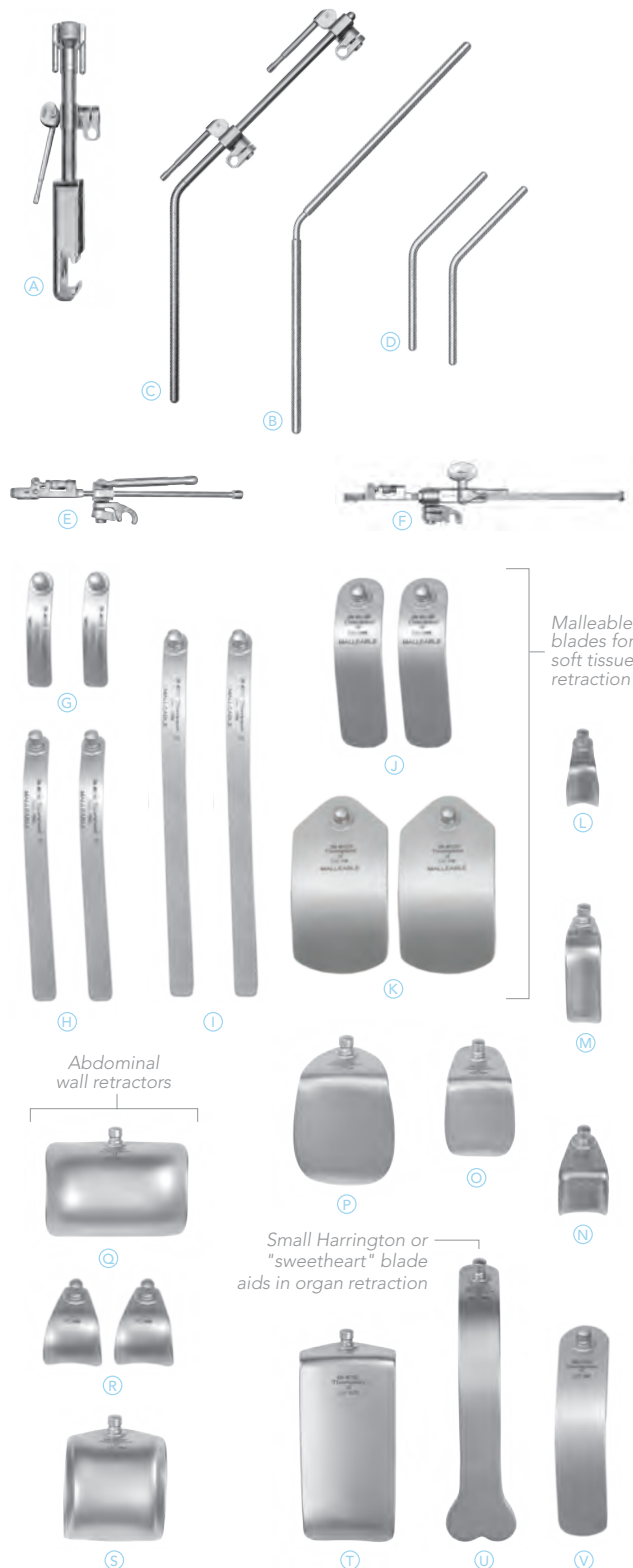


BASIC UPPER ABDOMINAL RETRACTOR SYSTEM

QTY	ITEM DESCRIPTION	S-LOCK PART #	INTERCH. PART #
Basic Upper Abdominal Retractor System		SL90055A	90055A
(A) 2	Elite II Rail Clamp with 2 Cam Joints 18"	41903AC	41903AC
(B) 1	Bilateral Crossbar (7 1/4" x 13 1/2" x 7 1/4")	41900F	41900F
(C) 2	Angled Arm 24" (8" x 16")	44124N	44124N
(D) 3	Cam II Clip-on 8"	SL42126WH	42126WH
(E) 2	Micro-Adjustable II Clip-on Angling 10"	SL45006CA	45006CA
(F) 1	Malleable 51mm x 203mm (2" x 8")	SL46122	46122
(G) 2	Malleable 76mm x 254mm (3" x 10")	SO46124A	46124A
(H) 2	Balfour 70mm x 76mm (2 3/4" x 3") [w/o lips]	SO46140C	46140C
(I) 2	Balfour 83mm x 76mm (3 1/4" x 3") [w/o lips]	SO46141C	46141C
2	Balfour 83mm x 127mm (3 1/4" x 5")	SO46141D	46141D
(J) 1	Harrington 64mm x 152mm (2 1/2" x 6")	SL46160	46160
(K) 2	Malleable Finger 6"	SL46191	46191

System includes S-Lock Bilateral Frame or Bilateral Frame.

Uncompromised Exposure for Your Smallest Patients: The Pediatric Abdominal System



PEDIATRIC ABDOMINAL SYSTEM

QTY	ITEM DESCRIPTION	S-LOCK PART #	INTERCH. PART #
Pediatric Abdominal System		SL91034AP	91034AP
(A) 1	Elite II Rail Clamp with 1 Cam Joint 11"*	41902ACS	41902ACS
(B) 1	24" Angled Arm (11" x 13")	44124W	44124W
(C) 1	Crossbar with 2 Cam Joints 24"	41900BC	41900BC
(D) 2	Angled Arm 12" (6" x 6")	44014S	44014S
(E) 5	Cam II Clip-on Angling 8"	SL42126WA	42126WA
(F) 1	Micro-Adjustable II Clip-on Angling 10"	SL45006CA	45006CA
(G) 2	Malleable 13mm x 64mm (1/2" x 2 1/2")	SL46115	46115
(H) 2	Malleable 13mm x 152mm (1/2" x 6")	SL46116	46116
(I) 2	Malleable 13mm x 203mm (1/2" x 8")	SL46117	46117
(J) 2	Malleable 25mm x 102mm (1" x 4")	SL46118P	46118P
(K) 2	Malleable Pediatric 51mm x 102mm (2" x 4")	SL46122P	46122P
(L) 1	Richardson 19mm x 25mm (3/4" x 1")	SL46125	46125
(M) 1	Richardson 19mm x 50mm (3/4" x 2")	SL46125A	46125A
(N) 1	Richardson 25mm x 32mm (1" x 1 1/4")	SL46126	46126
(O) 1	Kelly 38mm x 51mm (1 1/2" x 2")	SL46127	46127
(P) 1	Kelly 51mm x 64mm (2" x 2 1/2")	SL46128	46128
(Q) 1	Balfour 76mm x 51mm (3" x 2")	SL46140P	46140P
(R) 2	Balfour 32mm x 32mm (1 1/4" x 1 1/4")	SL46142	46142
(S) 1	Balfour 51mm x 51mm (2" x 2")	SL46142P	46142P
(T) 1	Richardson 51mm x 102mm (2" x 4")	SL46150	46150
(U) 1	Harrington 38mm x 127mm (1 1/2" x 5")	SL46162P	46162P
(V) 1	Deaver 25mm x 127mm (1" x 5")	SL46170	46170
1	Angling Head Wrench	43032	43032
2	Instrument Case w/Pin Mat (22" x 11" x 3 1/2")	50000G	50000G

System includes a modified S-Lock Quick Frame or Quick Frame with smaller components.

*41902IRC Infinite Height Rail Clamp may be used in place of Elite II Rail Clamp.

Thompson Retractor Frames

In use for over 50 years, the Thompson Retractor is the only mechanical retractor to offer one frame for all exposure needs, multi-planed retraction, and unlimited customization.



QUICK & BILATERAL FRAME BENEFITS

- Quick set up
- Sterile mount rail clamps
- Easy cam lock joints
- Independent lateral arms
- All one-piece components
- Uncompromised Exposure



ADDITIONAL BILATERAL BENEFITS

- Bilateral rigidity & stability
- Multi-plane retraction

Bilateral Frame

QUICK FRAME KITS

QTY	ITEM DESCRIPTION	S-LOCK PART #	INTERCH. PART #
	Quick Frame	SL90011B	90011B
1	Elite II Rail Clamp with 1 Cam Joint 18"	41902AC	41902AC
1	Crossbar with 2 Cam Joints 24"	41900BC	41900BC
2	Angled Arm 18" (8" x 10")	44118N	44118N
2	Angled Arm 24" (8" x 16")	44124N	44124N
3	Cam II Clip-on Angling 8"	SL42126WA	42126WA
2	Micro-Adjustable II Clip-on Angling 10"	SL45006CA	45006CA
1	Angling Head Wrench	43032	43032

BILATERAL FRAME KITS

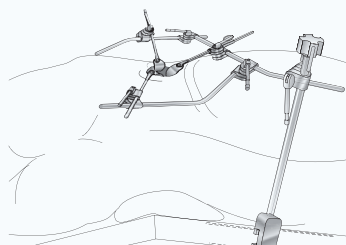
QTY	ITEM DESCRIPTION	S-LOCK PART #	INTERCH. PART #
	Bilateral Frame*	SL90015A	90015A
2	Elite II Rail Clamp with 2 Cam Joint 22"	41905AC	41905AC
1	Bilateral Crossbar Hinged	41900H	41900H
1	Bilateral Crossbar Hinged-Large	41900HL	41900HL
2	Angled Arm 24"	44124W	44124W
5	Cam II Clip-on Angling 8"	SL42126WA	42126WA
2	Micro-Adjustable II Clip-on Angling 10"	SL45006CA	45006CA
1	Angling Head Wrench	43032	43032

*Add one 41900BC for use as a Quick Frame

Exclusive Retractor Systems & Blade Kits

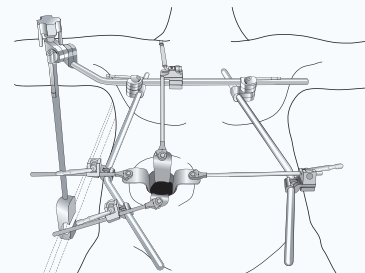
The Thompson Retractor offers independent retraction, versatile, and fast set up options, frame flexibility, and an expansive selection of blades sizes and styles. Unique systems for specialty procedures can be created from Thompson's complete blade and frame component selection.

Contact Thompson at 1.800.227.7543 to customize any frame set up and blade kit.



MINIMAL ACCESS BLADE KIT (91051)

Ideal for surgeons requiring smaller incisions, unsurpassed exposure, and excellent visibility – especially for nephrectomies.



KIDNEY TRANSPLANT BLADE KIT (91045L)

Smooth, narrow blades are ideal for limited working areas and the low profile angling handles in the Quick Frame will free up working space. Malleable Blades offer gentle retraction and versatility.

NEW Replace the Elite II Rail Clamp with the Infinite Height Rail Clamp for more versatility

INFINITE HEIGHT RAIL CLAMPS (IHRC)

ITEM DESCRIPTION	PART #
IHRC with 1 Cam Joint	41902IRC
IHRC with 2 Cam Joints	41903IRC

COMPETITOR SYSTEM OPTIONS

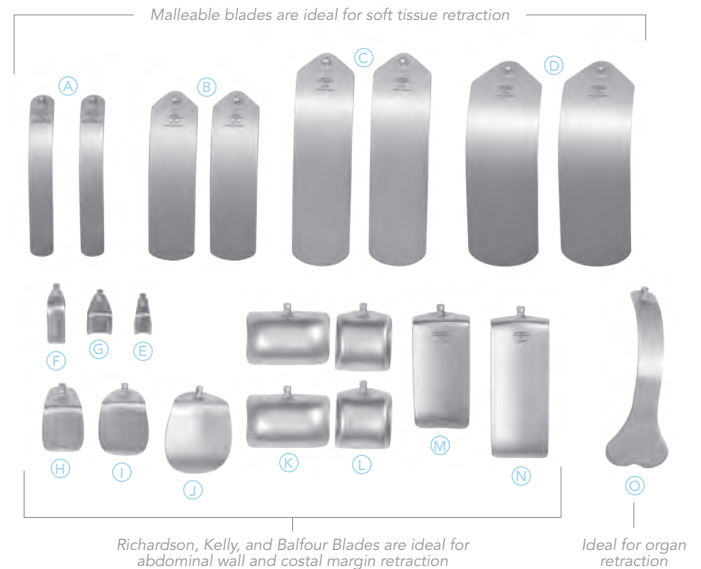
ITEM DESCRIPTION	PART #
IHRC with 1 Cam Joint for Omni-Tract	41908IRC
IHRC with 1 Cam Joint for Bookwalter	41909IRC



Quickly adjusts to any height between 13" - 22"

KIDNEY TRANSPLANT BLADE KIT

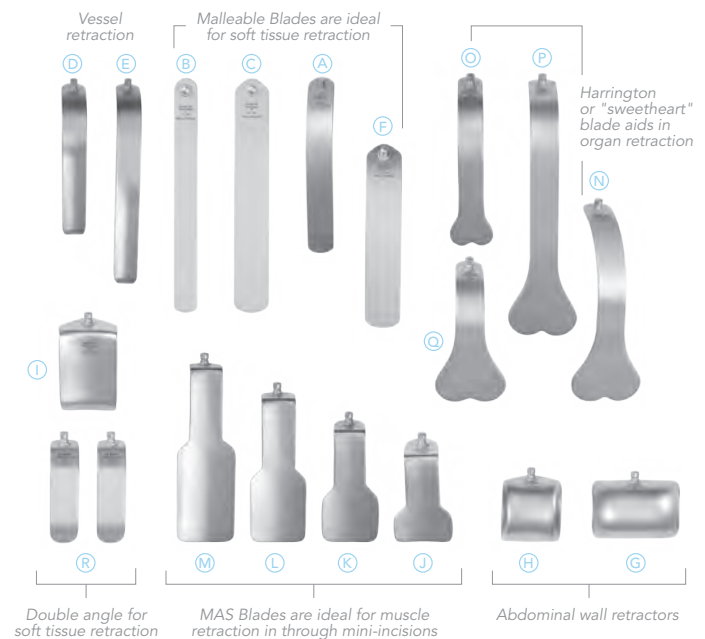
QTY	ITEM DESCRIPTION	S-LOCK PART #	INTERCH. PART #
	Kidney Transplant Blade Kit	SL91045L	91045L
(A) 2	Malleable 25mm x 203mm (1" x 8")	SL46118	46118
(B) 2	Malleable 51mm x 203mm (2" x 8")	SL46122	46122
(C) 2	Malleable 64mm x 254mm (2 1/2" x 10")	SL46124	46124
(D) 2	Malleable 76mm x 254mm (3" x 10")	SO46124A	46124A
(E) 1	Richardson 19mm x 25mm (3/4" x 1")	SL46125	46125
(F) 1	Richardson 19mm x 51mm (3/4" x 2")	SL46125A	46125A
(G) 1	Richardson 25mm x 32mm (1" x 1 1/4")	SL46126	46126
(H) 1	Kelly 38mm x 51mm (1 1/2" x 2")	SL46127	46127
(I) 1	Kelly 51mm x 64mm (2" x 2 1/2")	SL46128	46128
(J) 1	Kelly 64mm x 76mm (2 1/2" x 3")	SO46129	46129
(K) 2	Balfour 76mm x 51mm (3" x 2")	SL46140P	46140P
(L) 2	Balfour 51mm x 57mm (2" x 2")	SL46142P	46142P
(M) 1	Richardson 51mm x 102mm (2" x 4")	SL46150	46150
(N) 1	Richardson 51mm x 127mm (2" x 5")	SO46151	46151
(O) 1	Harrington 64mm x 152mm (2 1/2" x 6")	SL46160	46160



Requires S-Lock Quick Frame or Quick Frame, see page 8.

MINIMAL ACCESS BLADE KIT

QTY	ITEM DESCRIPTION	S-LOCK PART #	INTERCH. PART #
	Minimal Access Blade Kit	SL91051	91051
(A) 1	Malleable 25mm x 203mm (1" x 8")	SL46118	46118
(B) 1	Malleable 25mm x 254mm (1" x 10")	SL46118A	46118A
(C) 1	Malleable 38mm x 254mm (1 1/2" x 10")	SL46118B	46118B
(D) 1	Concave Renal Vein 25mm x 140mm (1" x 5 1/2")	SL46119B	46119B
(E) 1	Concave Renal Vein 25mm x 191mm (1" x 7 1/2")	SL46119C	46119C
(F) 1	Malleable 28mm x 203mm (1 1/2" x 8")	SL46123	46123
(G) 1	Balfour 76mm x 51mm (3" x 2")	SL46140P	46140P
(H) 1	Balfour 51mm x 51mm (2" x 2")	SL46142P	46142P
(I) 1	Richardson 51mm x 76mm (2" x 3")	SL46154	46154
(J) 1	MAS Richardson 51mm x 76mm (2" x 3")	SO46155	46155
(K) 1	MAS Richardson 51mm x 102mm (2" x 4")	SO46156	46156
(L) 1	MAS Richardson 51mm x 127mm (2" x 5")	SO46157	46157
(M) 1	MAS Richardson 51mm x 152mm (2" x 6")	SO46158	46158
(N) 1	Harrington 64mm x 152mm (2 1/2" x 6")	SL46160	46160
(O) 1	Harrington 38mm x 127mm (1 1/2" x 5")	SL46162P	46162P
(P) 1	Harrington 64mm x 203mm (2 1/2" x 8")	SL46163	46163
(Q) 1	Harrington 64mm x 102mm (2 1/2" x 4")	SL46165	46165
(R) 2	Double Angled 25mm x 76mm (1" x 3")	SL46660	46660



Requires S-Lock Quick Frame or Quick Frame, see page 8.

Retractor Handles



S-Lock Non-Angling



S-Lock Angling

CAM II CLIP-ON HANDLES

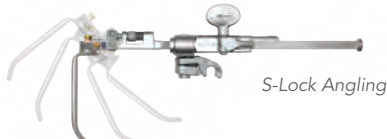
S-Lock Angling 8"	SL42126WA
S-Lock (non-angling) 8"	SL42126WH
S-Lock Angling 10"	SL42126WAL
Angling 8"	42126WA
(non-angling) 8"	42126WH



Angling Handles allow precise blade positioning and can be toed in 40°, or toed out 35° to release tension



S-Lock Non-Angling



S-Lock Angling

MICRO-ADJUSTABLE II HANDLES

S-Lock Clip-on Angling 7 3/4"	SL45007CA
S-Lock Clip-on (non-angling) 8 3/4"	SL45007STC
S-Lock Mini Micro Clip-on Angling 8" (cervical use only)	SL45010A
S-Lock Clip-on Angling 10"	SL45006CA
S-Lock Clip-on (non-angling) 10 3/4"	SL45006STC
S-Lock Clip-on Angling 15"	SL45006CAR
Clip-on Angling 10"	45006CA
Clip-on Angling 7 3/4"	45007CA
Clip-on (no-angling) 8 3/4"	45007STC
Clip-on (non-angling) 10 3/4"	45006STC
Clip-on Angling 15"	45006CAR
Clip-on Angling 20 1/2"	45007P
Slide-on Angling 7 3/4"	45007STA

ANGLING HEAD WRENCH

Wrench	43032	
--------	-------	---

S-Lock® Technology

- Precise retractor positioning without unwanted movement or rotation
- Stable retraction in any plane.
- Safer operation with reduced time spent repositioning blades
- Precise blade placement
- Swivel joints on tissue
- Lock when swivel is not desired



S-Lock Angling



Slide-on Joint

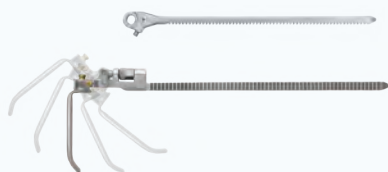
SLIDE-ON JOINT AND 8" HANDLES

Screw down, Slide-on Joint provides extra controlled blade placement.

Slide-on Joint 1/2" x 1/4"	42125N
S-Lock Angling Handle 8"	SL45003AS
S-Lock Handle 8"	SL45003L
Angling Handle 8"	45003AS
Non-Angling Handle 8"	45003L

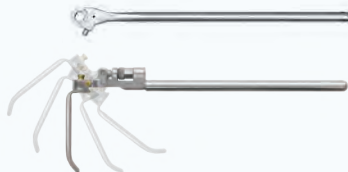
Adapter Handles

Our competitive adapter handles enable you to adapt any Thompson interchangeable blade to a Bookwalter, Omni, or Synthes retractor.



BOOKWALTER ADAPTER HANDLES

S-Lock Angling	SL45005AL
Angling	45005AL
Non-Angling	45005L



OMNI ADAPTER HANDLES

S-Lock Angling	SL45004AL
Angling	45004AL
Non-Angling	45004L



SYNTHES ADAPTER HANDLES

S-Lock Angling	SL45014AL
Angling	45014AL
Non-Angling	45014L



Easily attaches to a retractor blade with a removable Lite Clip.

Replace Your Headlight with the Lite Wand Xe or Retractor Lite Xe

The Lite Wand Xe and Retractor Lite Xe increase exposure by adding illumination and eliminating headlamps and shadows. Low-profile, the Lite Wand Xe and Retractor Lite easily clip on and direct cool, bright light into the incision. Additionally, the bendable gooseneck allows the light to reach the deepest, hard to see cavities improving illumination where it is needed most.



RETRACTOR LITE XE KITS

Retractor Lite Xe with ACMI Cable	40001RX
Retractor Lite Xe with Storz Cable	40002RX
Retractor Lite Xe with Wolf Cable	40004RX
Retractor Lite Xe with Olympus Cable	40019RX

LITE WAND XE KITS

Lite Wand Xe with ACMI Cable	40001X
Lite Wand Xe with Storz Cable	40002X
Lite Wand Xe with Wolf Cable	40004X
Lite Wand Xe with Olympus Cable	40019X

ACCESSORIES

Lite Clip (included in Retractor Lite Xe and Lite Wand Xe Kits)	40026
---	-------

Instrument Case and Lite Clip included in kits

Instrument Cases

Use an instrument case to keep blades organized. Available in two sizes.



INSTRUMENT CASES

26" x 10" x 5"	50000BL
22" x 11" x 3.5"	50000G

Extend Your Rail

Apply a Rail Extender to the OR table to increase rail length or width and provide more attachment options for the rail clamps.



RAIL EXTENDERS

Rail Extender 14" long with 2 1/4" offset (helpful in obese cases)	41917
Rail Extender 22"	41929



10170 East Cherry Bend Road
Traverse City, Michigan 49684
phone: 231.922.0177
fax: 231.922.0174

thompsonsurgical.com